

To the Side

PENNY MASON

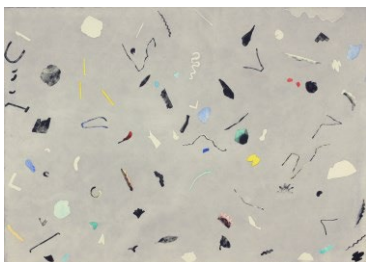
s.p.a.c.e Gallery, May 1 – 22, 2024

To the Side is based on encounters with points of stasis within a continuum of movement and flux. I have used the characteristic instability of watercolour media to generate connections between vast and miniscule spaces, surfaces and details within. The resulting images are suggestive of landscape features, cosmic events and microscopic worlds.

The forces that shape the landscape; including the effects of gravity, temperature, air and water flow, chemistry and the actions of living things are determined by the same principles across the universe. I mobilize these principles when using alluvial and aqueous painting techniques to create evocations of the ebb and flow of time, space and matter. Like breaking waves on a shoreline, these material processes reveal a state of continuous emergence.

The processes involved in making my work generate sites for contemplating the wonder of these systems and my place within them.

The title for this show "*To the Side*", comes from the opening lyrics of *Partita for Eight Voices* by Caroline Shaw. They are the textual instructions Sol Lewitt wrote to direct the draftsman of his *Wall Drawing 305*. I first heard these lines as the theme song for the BBC TV drama, *Marriage* and was struck by their references to compositional strategies as well as their joyful dynamism.



1 In the Shade #1
2024
Watercolour on paper
75 x 105cm (unframed)

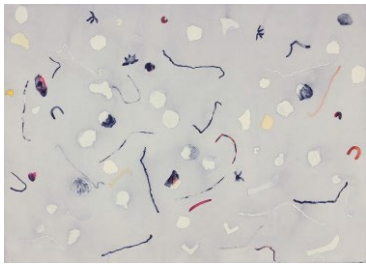
\$4470.00
(including frame,
art glass)
\$3,700.00
(unframed)



2 In the Shade #2
2024
Watercolour on paper
75 x 105cm (unframed)

\$4470.00
(including frame,
art glass)
\$3,700.00
(unframed)

Blenheim Gallery and Garden
733 Cressy Road, Longford Tasmania 7301
M: 0419584667
E: contact@blenheimgalleryandgarden.com.au



3 In the Shade #3
2024
Watercolour on paper
75 x 105cm (unframed)

\$4,470.00
(including frame,
art glass)
\$3,700.00
(unframed)



4 Smoke and Embers
2024
Watercolour on paper
75 x 95cm (unframed)

\$4,470.00
(including frame,
art glass)
\$4,150.00
(unframed)



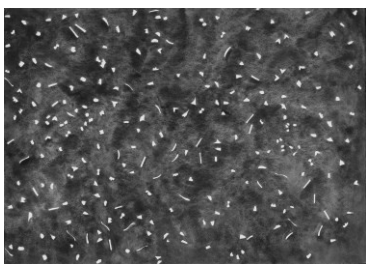
5 Trip Hazards
2024
Watercolour on paper
70 x 100cm (unframed)

\$3,950.00
(including frame,
art glass)
\$3,300.00
(unframed)



6 On the Ground
2024
Watercolour on paper
75 x 105cm (unframed)

\$4470.00
(including frame,
art glass)
\$3,700.00
(unframed)



7 Points of Light
2024
Watercolour on paper
75 x 105cm (unframed)

\$4,470.00
(including frame,
art glass)
\$3,700.00
(unframed)



8 Bloom
2024
Watercolour on paper
75 x 105cm (unframed)

\$4,470.00
(including frame,
art glass)
\$3,700.00
(unframed)



9 Squeaking Point
2024
Watercolour on paper
80 x 120cm (unframed)

\$4,670.00
(including frame,
art glass)
\$3,900.00
(unframed)



s.p.a.c.e. Gallery
Scotch Oakburn College
85 Penquite Road,
Newstead Tasmania 7250

*Please note framing prices are an estimate by Whitelaws Framing
prices may vary slightly if other framers are sought.

Blenheim Gallery and Garden
733 Cressy Road, Longford Tasmania 7301
M: 0419584667
E: contact@blenheimgalleryandgarden.com.au