

**ANITA DENHOLM & GENE MCLAREN**

**Stone, steel and some .....**

**15 October – 3 November 2022**



1. **'The Climber- 2021'**

Figure- Reclaimed copper wire, Vermin mesh, Galvanised tie wire, fencing wire

Base- Reclaimed Oregon timber ladder.

(2.5 m x 50 cm x 40 cm)

The Climber-

Seeking to climb above the status quo,

Reaching, climbing up to be recognised,

Transparent, seeking to be seen- fading into the background.....

Defying gravity (and convention), self supporting

This piece takes on its surroundings, seeing the landscape through the figure- not blocking out view.

\$ 3000



## 2. **'Empty Nest'**

**(Outside)**

Reclaimed wire- copper, fencing, barbed, clothes line, chicken mesh-untreated and galvanised

Base- Vesicular Basalt

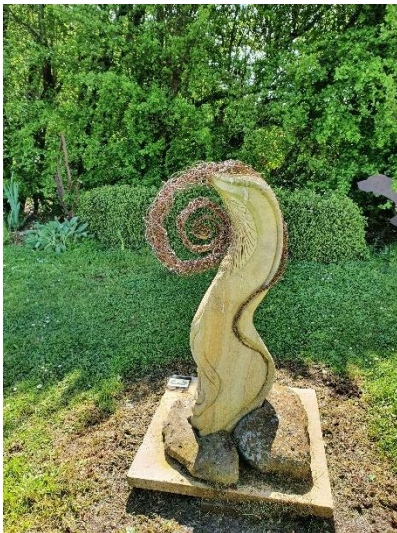
A comment on Life,

A place of nurturing- protecting the brood from the entanglements and the barbs of life- role fulfilled, now empty.

Filled with debris from garden-a new life forming- a new role.

\*This piece will grow a 'new life' when in a garden filling with leaves, twigs spider webs, and who know it may even be a new home for other animals. Wires will weather naturally over time.

\$ 700



## 3. **'Emergence'**

Copper wire, Brass wire, Beige Nunamara Sandstone

A feminine form in the rear aspect, uncurling, unfurling emerging in a natural form

**(Outside-120 cm)**

\$1200

sold

733 Cressy Road, Longford Tasmania 7301

M: 0419584667

[www.blenheimgalleryandgarden.com.au](http://www.blenheimgalleryandgarden.com.au)



4. **'Paddock Rock Grey-maquette'**  
(Outside 30 cm x 40cm x 15 cm)

A hard stone, with peculiar qualities and hidden voids.  
Combines hand carved and air tool elements.  
\$600



5. **Derwent Valley – Face fading**

Take away everything that doesn't look like the finished product  
Exercise in seeing how to fit into an odd shaped block – a happier expression on face.  
A stone full of natural variations. Red/black – Upper Derwent Valley Sandstone –  
burnt / bushfire affected  
45 x 50 x 20cm  
\$900





6. **Standing on the edge- stepping out with a 'life line'**  
Copper wire, galvanised wire and vermin mesh, Vesicular basalt base.  
\$900



7. **Balance - Jumping, Landing with purpose - (after Jethro Tull)**  
Copper wire, galvanised wire and vermin mesh, vesicular basalt base  
\$900

**10. Mask series- 2020- 2022.**

Natural stones, Reclaimed cooper wire hand made into mesh, Aluminium rods.

A response to the Pandemic.

Masks we were all wearing, hiding faces, hiding emotions and hiding fatigue.

Masks as cages, repressing, confusing communications, protecting.

Health and essential workers 'rock solid' during the first years of the pandemic



a) Small  
\$ 300 each



- b) Large  
\$ 650 each



11. **'Landscape of the Pandemic'**

The responses of people in the throws of C-19, some happily wear masks, many try to avoid masks- in the end "We are all in this together"  
\$1800

12. **'Unts'- 2021- 2022**

Figures- Reclaimed copper wire, Vermin mesh, Galvanised tie wire,  
Paintings- Acrylic on board, repurposed frames,

The back story to this group involves a 'misheard description' of a Nurse, usually at 3 am, uttered by an inebriated patient when receiving medical attention in very remote communities.

To keep perspective- the nurse visualised what this creature called 'Unt' would look like....as she had been called this so many times- personifying and giving it a form in her mind helped.

In the paintings- the Trees variously represent positive virtues- Truth, Justice, Freedom



**13. 'Unt with Blue Sky and Tree'**

Acrylic on Board, Repurposed Frame.

Unt with iconic Tasmanian 'highway tree' with a Blue Sky vision - reflecting on returning home on holiday.

\$ 600



**14. 'Unt with Yellow Sky and Tree'**

Acrylic on Board, Unusual historic frame- (August 12/ 00 on rear- upper margin-122 year old frame.)

Unt feeling unloved and 'jaundiced' about how much positive impact one person can have in the landscape of so much dysfunction....

\$ 600





### 15. 'Rushin Unt'

Acrylic on Board, Repurposed frame.

An artistic response to the Russian invasion of Ukraine.

3 Trees- Truth Justice and Freedom

Flag- Ukraine

Statue- Rodina Mat -Liberty of Kyiv

Sun- Above all ...Hope and Humanity shine through

Unt- Rushin' into conflict

Storm clouds gathering- conflict on the horizon

\$500



733 Cressy Road, Longford Tasmania 7301

M: 0419584667

[www.blenheimgalleryandgarden.com.au](http://www.blenheimgalleryandgarden.com.au)

**16. 'A Flock of Unts'**

Reclaimed copper wire, Vermin mesh, Galvanised tie wire,

The embodiment of what an 'unt looks like.... What is the collective noun for 'unts'

A 'family' .....

\$1500 (as a group)

**17. Wire figures. 2020- 2022**

Figures- Reclaimed copper wire, Galvanised tie wire, Aluminium Foil.

Bases-Natural stone, Reclaimed timber,

The figures are harbingers of 'hope and freedom'

All movement, all breaking free from the ties that bind.....

A joy of 'release and realisation'

From small to large - all have a semi-transparent feel, not solid.

All started as a sketch for something more solid in the future.



**18. 'Joy of Flying Free'**

Copper wire, East Coast Granite

\$450 each sold



19. **'Want to Fly, Want to see me try'**  
Foil, Galvanised wire, East Coast Granite  
\$600



20. **'Free from the Mask, Free to be, Free to Dance'**  
Copper wire, Fine copper mesh mask, Oregon base  
\$ 600

## 21. Maquette(s) Series. 2022

Stone-

Beige- Nunamara Sandstone,

Red/black- Upper Derwent Valley Sandstone- burnt/bushfire affected

Grey-Vesicular Basalt- Upper Derwent Valley.

Upon gaining a significant commission (single block 2m tall carved)- Anita decided that a series of maquettes would have to be made to discover techniques to create a face in stone- to firm up thoughts on how this is to be achieved



## 22. 'Nunamara- faces emerging'-

(35 cm x 20 cm x20 cm)

Utilising collected beige sandstone off cuts- to create a face hand carve- with harsh machine cuts for emphasis, a contrast to the 'soft' hand chiselled faces.

a) smaller \$750



b) larger \$800

### **Art as Activism-Ocean Waste Series 2021-2022**

Reclaimed copper wire handmade mesh, Ocean debris- Cocos Keeling Islands (Aus) Bases- Reclaimed Oregon timber from Inveresk Cottage and Launceston dry dock

During a working contract on Cocos Keeling Islands -CKI -(Aus) - the worlds most isolated, inhabited island group situated in the Indian Ocean- I was overwhelmed by the sheer volume of debris on the eastern beaches of the atoll.

Fishing gear, ropes, ciggie lighters, plastic toys and all manner of plastic rubbish.

My mind goes to the amount of rubbish on these beaches when ever I ponder on this time. Visions of rubbish piled up instead of the blue skies, white sand and sunshine.

The process of making the reclaimed wire mesh is meditative/mindfulness, focussed on the manufacture and the adaptive nature of repurposing a waste commodity into a thing of beauty and awareness.

What to do? Make Art of course!

This is a series- 'Art as Activism' to raise awareness of the Plight of Plastics in our Oceans, "Art for the Sake of the Oceans, and our Future Generations."





**24. 'On Consideration of the Oceans #3'**

(40 cm x 15 cm x 30 cm)

#3 in this critically acclaimed series-

#1 a finalist in National Capital Art Prize- sustainability section (Canberra ACT) 2022,

#2 finalist in Birch's Bay Art Prize- Small Sculpture Prize- (Woodbridge Tas) 2022

\$1500



**25. 'On Consideration of the Oceans #4' - Maquette size**

An exercise in discovering how small can the mesh process go??

733 Cressy Road, Longford Tasmania 7301

M: 0419584667

[www.blenheimgalleryandgarden.com.au](http://www.blenheimgalleryandgarden.com.au)

The base is in its natural state- reclaimed timber from the Launceston dry dock- has a definite nautical feel about it.

(20 cm x 15 cm x 20 cm)

\$700

26. **'Tasmanian Giant Freshwater Crayfish'**

Copper wire

Various sizes.

Price TBA



27. **'Summer coastal heat'**

Acrylic on Birch board

The cool aspect of hiding in the She Oaks during heat of the day,

Clear cool water, Smell of the Sea, Buzz of the insects in the undergrowth.....

Takes me back to a summer idyll.

\$650



28. **'East Coast -Children'**

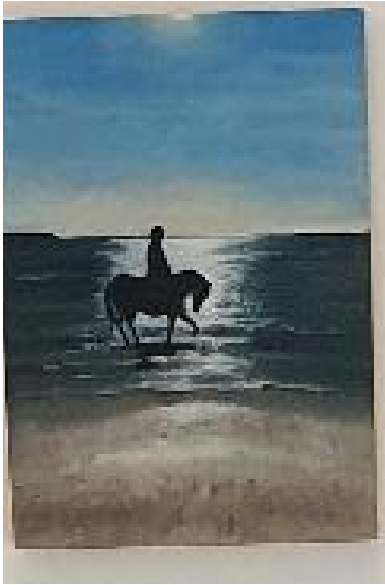
Acrylic on birch board

\$ 200

733 Cressy Road, Longford Tasmania 7301

M: 0419584667

[www.blenheimgalleryandgarden.com.au](http://www.blenheimgalleryandgarden.com.au)



**29. 'North Coast- Poppette and Pony'**

Acrylic on birch board  
\$ 200



**30. 'Shy - Sexual Fertility Arising from behind a Mask'**

733 Cressy Road, Longford Tasmania 7301  
M: 0419584667  
[www.blenheimgalleryandgarden.com.au](http://www.blenheimgalleryandgarden.com.au)

Figure-Jasper (natural state), Reclaimed copper wire handmade mesh,  
Base -Reclaimed Oregon timber from the local dry dock  
30 cm x15cm x15 cm

Part of the Mask Series.....

This thought- a mask hiding the persons true sexuality came to me whilst a work looking at constantly masked faces....

We miss very important clues and cues with our faces covered- you can only say so much with eyes only...  
The form morphed between a fertile form -'pregnant' with anticipation, and a close up of a gamete tail.....

Both represent basic principles which drive interactions between most life forms.... the need to reproduce the species.

The Masks of the last 2.5 years hide the facial/visual clues of interactions....

This 'Mask' embodies what is Hidden, Shy....  
\$700



### **31. 'Emerging-Birds forming'**

Basalt rock with Ironstone stain and concretions  
- natural form and light polish.

15 cm x 20cm x 15cm

How do you carve a bird?...take away everything that doesn't look like a bird.

Raptors and parrots are favourites of mine.

733 Cressy Road, Longford Tasmania 7301

M: 0419584667

[www.blenheimgalleryandgarden.com.au](http://www.blenheimgalleryandgarden.com.au)

These two are emerging from their stone.... \$350 each



### **32. 'Compassion'**

Figures- Reclaimed copper wire, galvanised wire,  
Base- Vesicular Basalt

Compassion Embodied-An Emotional Response to a Song .

Compassion

"I'll stand by you,

Won't let nobody hurt you,

I'll stand by you....

Take me in, into your darkest hour,

I'll stand by you"

A Mate never leaves a Mate in the Field- the ANZAC spirit.

I photographed this piece with Flanders poppies in the background- sourced from the Western Front- It brought up all sorts of emotions for me.....

You are not Alone,

Together-We will get through this Together.....

You will never walk Alone.

733 Cressy Road, Longford Tasmania 7301

M: 0419584667

[www.blenheimgalleryandgarden.com.au](http://www.blenheimgalleryandgarden.com.au)



My work as a Nurse leads me to this place often-  
I will stand by you and never desert you-I'm here  
for you in your darkest hour.

Even writing this -it makes me emotional.

This is my deepest place.

Compassion.

\$1500