

**Penny Mason**



*Forest Floor, 2021*

Watercolour on Paper

h 88.5 x w 118.5 cm (including frame)

Finalist Tasmanian Women's Art Award 2022

## ARTIST STATEMENT

*My practice draws from decorative traditions inspired by the natural environment as well as the unstable qualities of watercolours. Motifs in my work may include horizon lines, geological features, boundaries (natural or arbitrary), icebergs, billowing clouds, forest litter, human discards, deep water and tidal estuaries. Works are sometimes paired with indexes of overnight weather events in the form of frost-etched watercolours on paper.*

*The weightless character of these elements recalls the constant rearrangement of the physical world by the haphazard processes of natural and human generated events where interrelated components flow together in time and geography.*

*I think about ideas that circulate around landscape painting; the representation of land, country, sites, territories, and views. How places affect me as well as the impact of my presence are concurrent questions.*

Penny Mason

August 2022

Blenheim Gallery and Garden  
733 Cressy Road, Longford Tasmania 7301  
M: 0419584667  
E: [contact@blenheimgalleryandgarden.com.au](mailto:contact@blenheimgalleryandgarden.com.au)  
[www.blenheimgalleryandgarden.com.au](http://www.blenheimgalleryandgarden.com.au)

## PENNY MASON CATALOGUE

18 February – 15 March 2023



1. **Speeding Landscape, 2017**

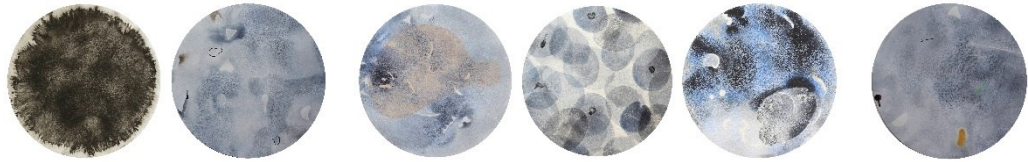
Watercolour and Ink on Paper

H 94 x W 144 cm (including frame)

\$3,200

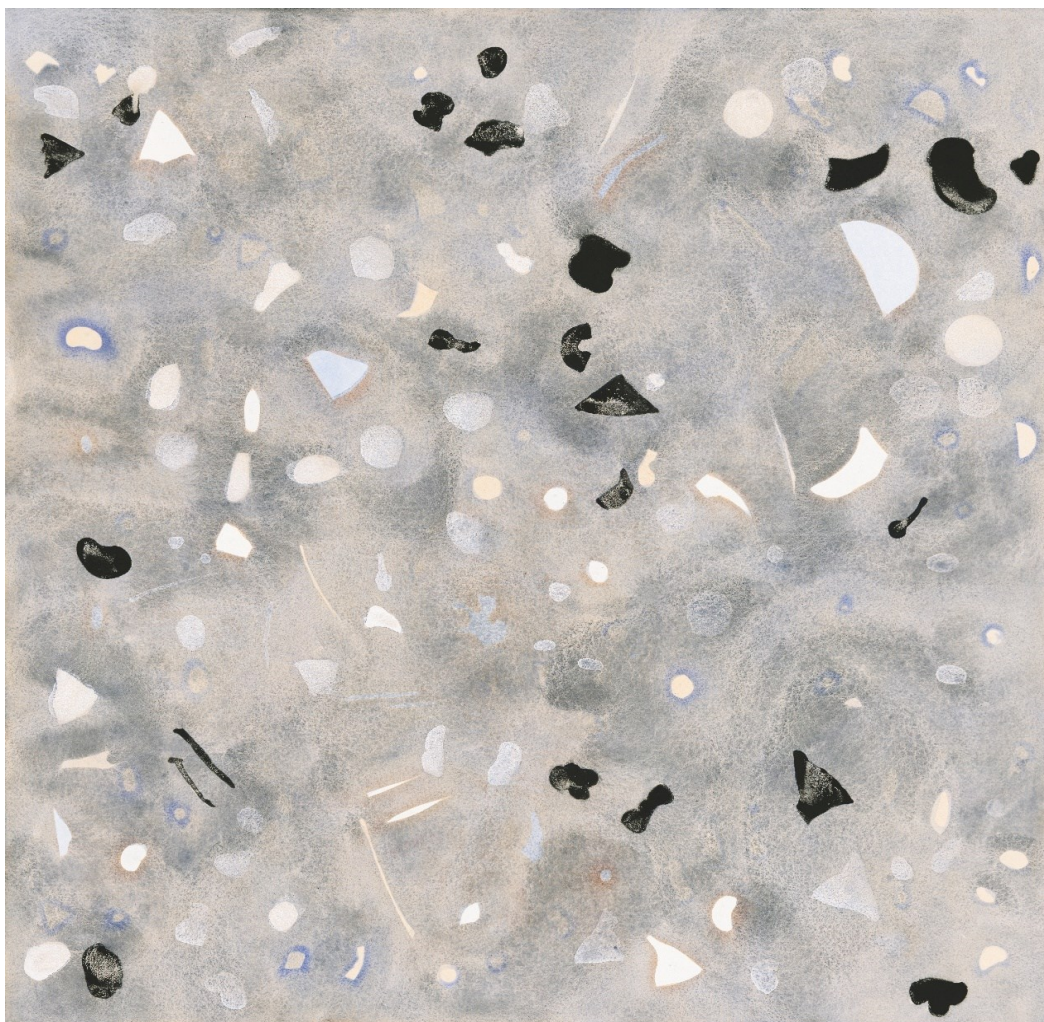
Finalist, Wrest Point Casino Art Award, Tas, 2015

Blenheim Gallery and Garden  
733 Cressy Road, Longford Tasmania 7301  
M: 0419584667  
E: [contact@blenheimgalleryandgarden.com.au](mailto:contact@blenheimgalleryandgarden.com.au)  
[www.blenheimgalleryandgarden.com.au](http://www.blenheimgalleryandgarden.com.au)



- 1 *Between Waves and Tides – Tasmanian Coastline #2, 2016*  
Watercolour on Paper  
(a) h 47 x w 48 cm, (b) h 47 x w 82.5 cm, (c) h 47 x w 118 cm (including frames)  
\$4,000  
Finalist, National Works on Paper Award, Vic, 2016 ●





- 2 *Inside the Whale's Ear*, 2014  
Watercolour on Paper  
H 102 x w 102cm (including frame)  
\$4,300  
Finalist, John Glover Art Prize, Tas, 2015

Blenheim Gallery and Garden  
733 Cressy Road, Longford Tasmania 7301  
M: 0419584667  
E: [contact@blenheimgalleryandgarden.com.au](mailto:contact@blenheimgalleryandgarden.com.au)  
[www.blenheimgalleryandgarden.com.au](http://www.blenheimgalleryandgarden.com.au)



3 *Kanamaluka Heads*, 2022  
Watercolour on Paper  
h 93 x w 91.5 cm (including frame)  
\$4,000  
Finalist, Tidal.22, Tas, 2022 ●

Blenheim Gallery and Garden  
733 Cressy Road, Longford Tasmania 7301  
M: 0419584667  
E: [contact@blenheimgalleryandgarden.com.au](mailto:contact@blenheimgalleryandgarden.com.au)  
[www.blenheimgalleryandgarden.com.au](http://www.blenheimgalleryandgarden.com.au)





- 4 *Over Land Musselroe Bay, 2021*  
Watercolour on Paper  
H 94 x 91.5cm (including frame)  
\$4,000  
Finalist, Bay of Fires, Tas, 2021

Blenheim Gallery and Garden  
733 Cressy Road, Longford Tasmania 7301  
M: 0419584667  
E: [contact@blenheimgalleryandgarden.com.au](mailto:contact@blenheimgalleryandgarden.com.au)  
[www.blenheimgalleryandgarden.com.au](http://www.blenheimgalleryandgarden.com.au)



- 5 *Storm Debris - White Beach, 2020*  
Watercolour on Paper  
xxx (including frame)  
\$3,800  
Finalist, Swan Hill Print and Drawing Prize, Vic, 2020

Blenheim Gallery and Garden  
733 Cressy Road, Longford Tasmania 7301  
M: 0419584667  
E: [contact@blenheimgalleryandgarden.com.au](mailto:contact@blenheimgalleryandgarden.com.au)  
[www.blenheimgalleryandgarden.com.au](http://www.blenheimgalleryandgarden.com.au)





6 *Musselroe Bay Camp Site Mirabilia, 2020*  
Watercolour on Paper  
H 96 x w 94cm (including frame)  
\$4,000  
Finalist, St Kevins Art Prize, Vic, 2021 ●

Blenheim Gallery and Garden  
733 Cressy Road, Longford Tasmania 7301  
M: 0419584667  
E: [contact@blenheimgalleryandgarden.com.au](mailto:contact@blenheimgalleryandgarden.com.au)  
[www.blenheimgalleryandgarden.com.au](http://www.blenheimgalleryandgarden.com.au)



8. *Rheban Beach*, 2014,  
Watercolour on Paper  
H 92 x 91cm (including frame)  
\$3,900  
Winner, watercolour section, Tasmanian Art Award at Eskleigh, 2015

Blenheim Gallery and Garden  
733 Cressy Road, Longford Tasmania 7301  
M: 0419584667  
E: [contact@blenheimgalleryandgarden.com.au](mailto:contact@blenheimgalleryandgarden.com.au)  
[www.blenheimgalleryandgarden.com.au](http://www.blenheimgalleryandgarden.com.au)

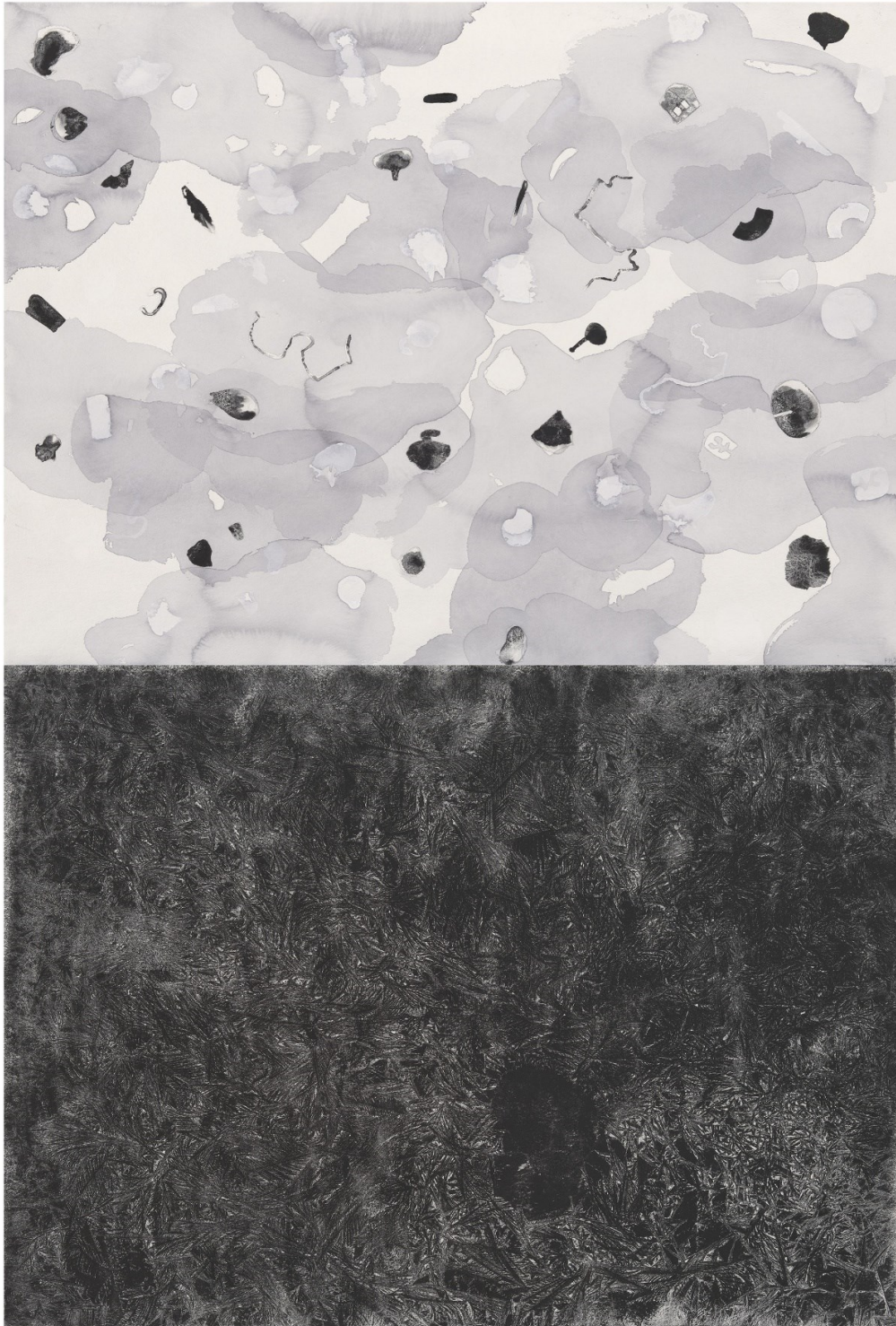




9. *Storm Debris - Trevallyn Pond, 2021*  
Watercolour on Paper  
h 93 x w 92 cm, (including frame)  
\$4,000  
Finalist, John Villiers Outback Art Prize, Qld, 2022 ●

Blenheim Gallery and Garden  
733 Cressy Road, Longford Tasmania 7301  
M: 0419584667  
E: [contact@blenheimgalleryandgarden.com.au](mailto:contact@blenheimgalleryandgarden.com.au)  
[www.blenheimgalleryandgarden.com.au](http://www.blenheimgalleryandgarden.com.au)





10. *Tamar Estuary, 2020,*  
Watercolour on Paper  
h 133 x w 95 cm (including frame)  
\$4,400 Finalist, Tidal.20, Tas, 2020.

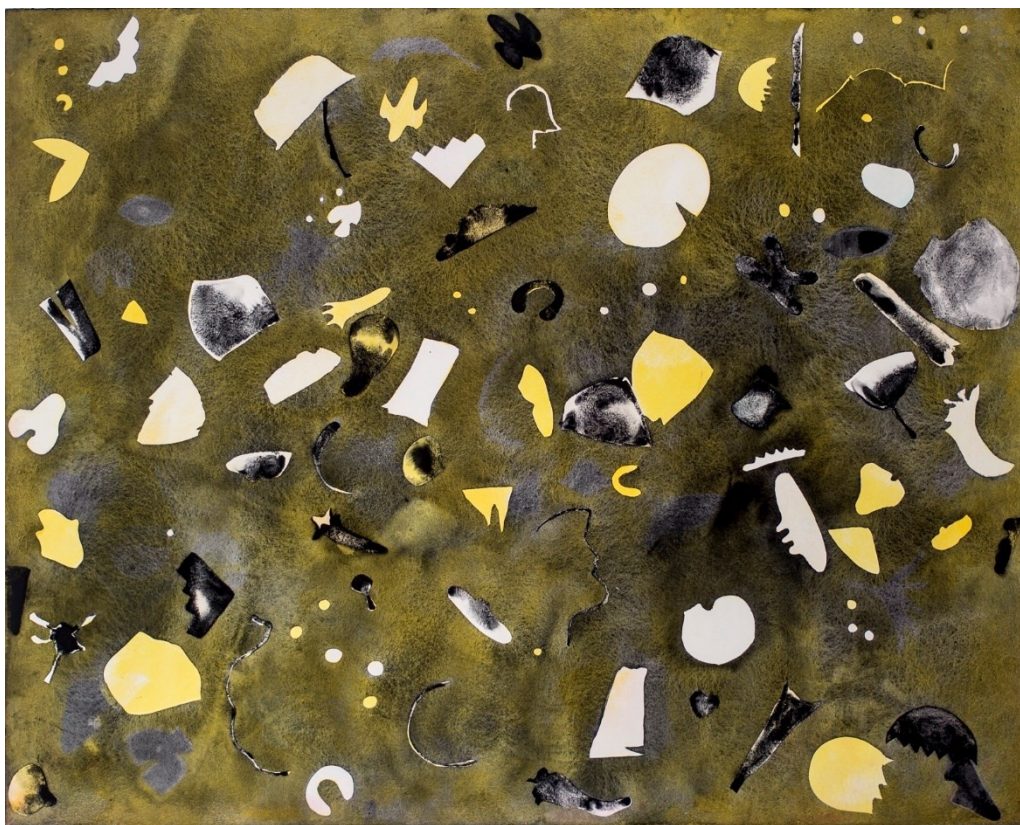
Blenheim Gallery and Garden  
733 Cressy Road, Longford Tasmania 7301  
M: 0419584667  
E: [contact@blenheimgalleryandgarden.com.au](mailto:contact@blenheimgalleryandgarden.com.au)  
[www.blenheimgalleryandgarden.com.au](http://www.blenheimgalleryandgarden.com.au)





11. *Forest Walk #2, 2022*  
Watercolour on Paper  
h 109 x w 88 cm (including frame)  
\$4,300  
Finalist, Hornsby Art Prize, NSW, 2022

Blenheim Gallery and Garden  
733 Cressy Road, Longford Tasmania 7301  
M: 0419584667  
E: [contact@blenheimgalleryandgarden.com.au](mailto:contact@blenheimgalleryandgarden.com.au)  
[www.blenheimgalleryandgarden.com.au](http://www.blenheimgalleryandgarden.com.au)



12. *In a Mirror*, 2019  
Watercolour on Paper  
H 90.5 x W 108 cm (including frame)  
\$4,200  
Finalist, NOW Contemporary Art Prize, NSW, 2019

Blenheim Gallery and Garden  
733 Cressy Road, Longford Tasmania 7301  
M: 0419584667  
E: [contact@blenheimgalleryandgarden.com.au](mailto:contact@blenheimgalleryandgarden.com.au)  
[www.blenheimgalleryandgarden.com.au](http://www.blenheimgalleryandgarden.com.au)





13. *Forest Floor*, 2021  
Watercolour on Paper  
h 88.5 x w 118.5 cm (including frame)  
\$4,300  
Finalist, Tasmanian Women's Art Award, 2022

Blenheim Gallery and Garden  
733 Cressy Road, Longford Tasmania 7301  
M: 0419584667  
E: [contact@blenheimgalleryandgarden.com.au](mailto:contact@blenheimgalleryandgarden.com.au)  
[www.blenheimgalleryandgarden.com.au](http://www.blenheimgalleryandgarden.com.au)



14. Eddystone Point Tidal Pool – Noon 2018

Watercolour on Paper

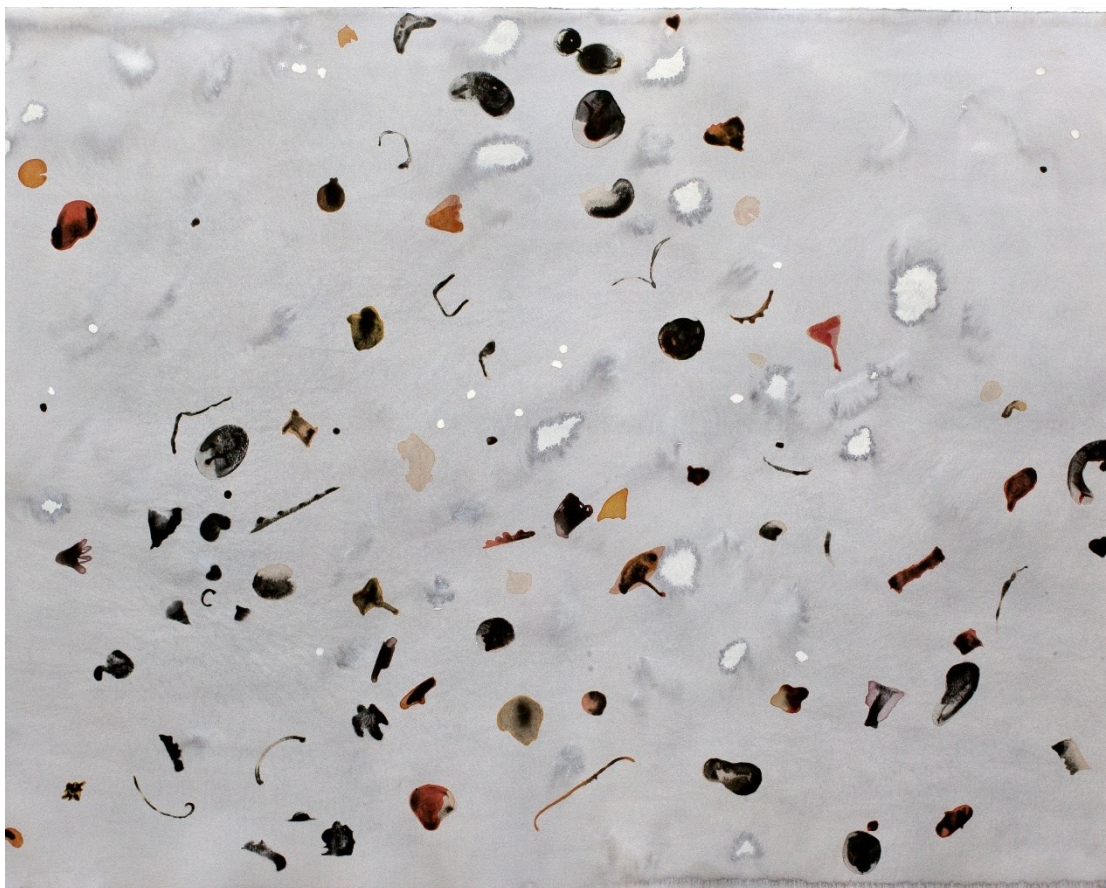
H 92 x w 90cm (including frame)

\$4,200

Finalist, Tidal, 2018 ●

Blenheim Gallery and Garden  
733 Cressy Road, Longford Tasmania 7301  
M: 0419584667  
E: [contact@blenheimgalleryandgarden.com.au](mailto:contact@blenheimgalleryandgarden.com.au)  
[www.blenheimgalleryandgarden.com.au](http://www.blenheimgalleryandgarden.com.au)





15. *Debris Cloud from Distant Fire*, 2018  
Watercolour on Paper  
H 90.5 x W 108 cm (including frame)  
\$4,200  
Finalist, Hornsby Art Prize, NSW, 2019

Blenheim Gallery and Garden  
733 Cressy Road, Longford Tasmania 7301  
M: 0419584667  
E: [contact@blenheimgalleryandgarden.com.au](mailto:contact@blenheimgalleryandgarden.com.au)  
[www.blenheimgalleryandgarden.com.au](http://www.blenheimgalleryandgarden.com.au)





16. *Dump, 2021*  
Watercolour and Ink on Paper  
h 94.5 x w 123 cm (including frame)  
\$3,900  
Finalist, Adelaide Perry, NSW, 2022

Blenheim Gallery and Garden  
733 Cressy Road, Longford Tasmania 7301  
M: 0419584667  
E: [contact@blenheimgalleryandgarden.com.au](mailto:contact@blenheimgalleryandgarden.com.au)  
[www.blenheimgalleryandgarden.com.au](http://www.blenheimgalleryandgarden.com.au)