

Penny Mason



Forest Floor, 2022,
Watercolour on Paper,
h 88.5 x w 118.5 cm (including frame)
Finalist Tasmanian Women's Art Award, 2022

ARTIST STATEMENT

My practice draws from decorative traditions inspired by the natural environment as well the unstable qualities of watercolours. Motifs in my work may include horizon lines, geological features, boundaries (natural or arbitrary), icebergs, billowing clouds, forest littler, human discards, deep water and tidal estuaries. Works are sometimes paired with indexes of overnight weather events in the form of frost-etched watercolours on paper.

The weightless character of these elements recalls the constant rearrangement of the physical world by the haphazard processes of natural and human generated events where interrelated components flow together in time and geography.

I think about ideas that circulate around landscape painting; the representation of land, country, sites, territories, and views. How places affect me as well as the impact of my presence are concurrent questions.

Penny Mason, August 2022

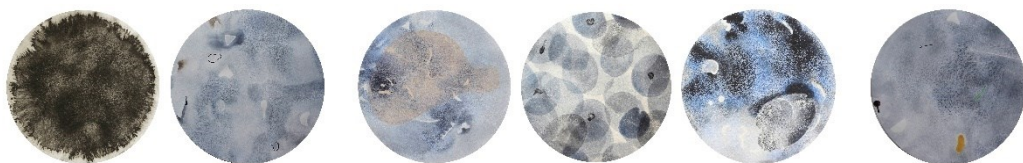
PENNY MASON CATALOGUE

18 February – 15 March 2023

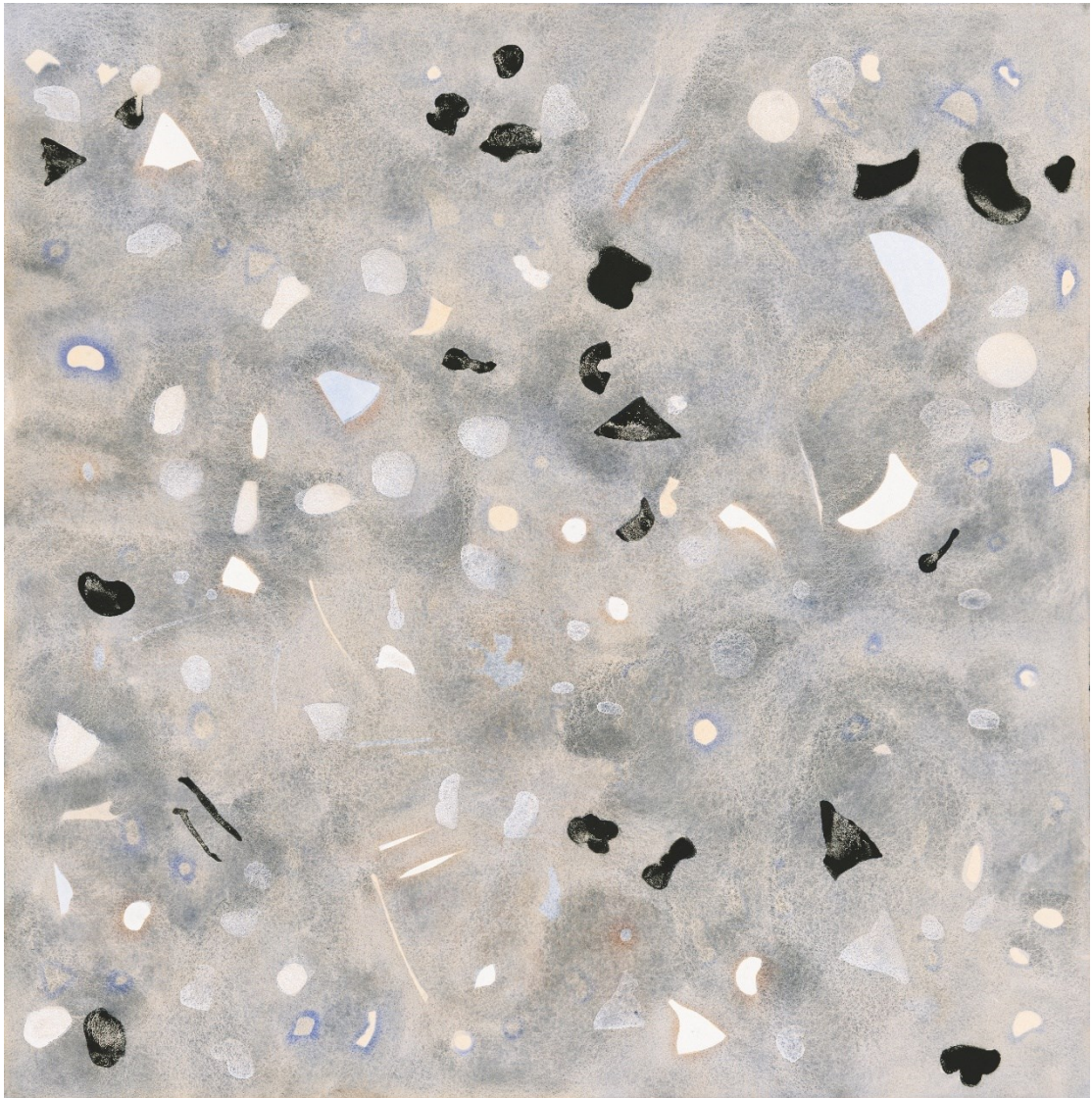
Catalogue



- 1 *Speeding Landscape*, 2017
Watercolour and Ink on Paper,
H 94 x w 142cm (including frame)
\$3,200
Finalist, Wrest Point Casino, Tas, 2015



- 2 *Between Waves and Tides – Tasmanian Coastline #2, 016*
Watercolour on Paper,
(a) h 47 x w 48 cm, (b) h 47 x w 82.5 cm, (c) h 47 x w 118 cm (including frames)
\$4,000
Finalist, National Works on Paper Award, Vic, 2016



3 *Inside the Whale's Ear*, 2014
Watercolour on Paper
H 102 x w 102cm (including frame)
\$4,300 ex GST
Finalist, Glover, Tas, 2015



4 *Kanamaluka Heads*, 2022
Watercolour on Paper
h 93 x w 91.5 cm (including frame)
\$4,000
Finalist, Tidal, Tas, 2022.



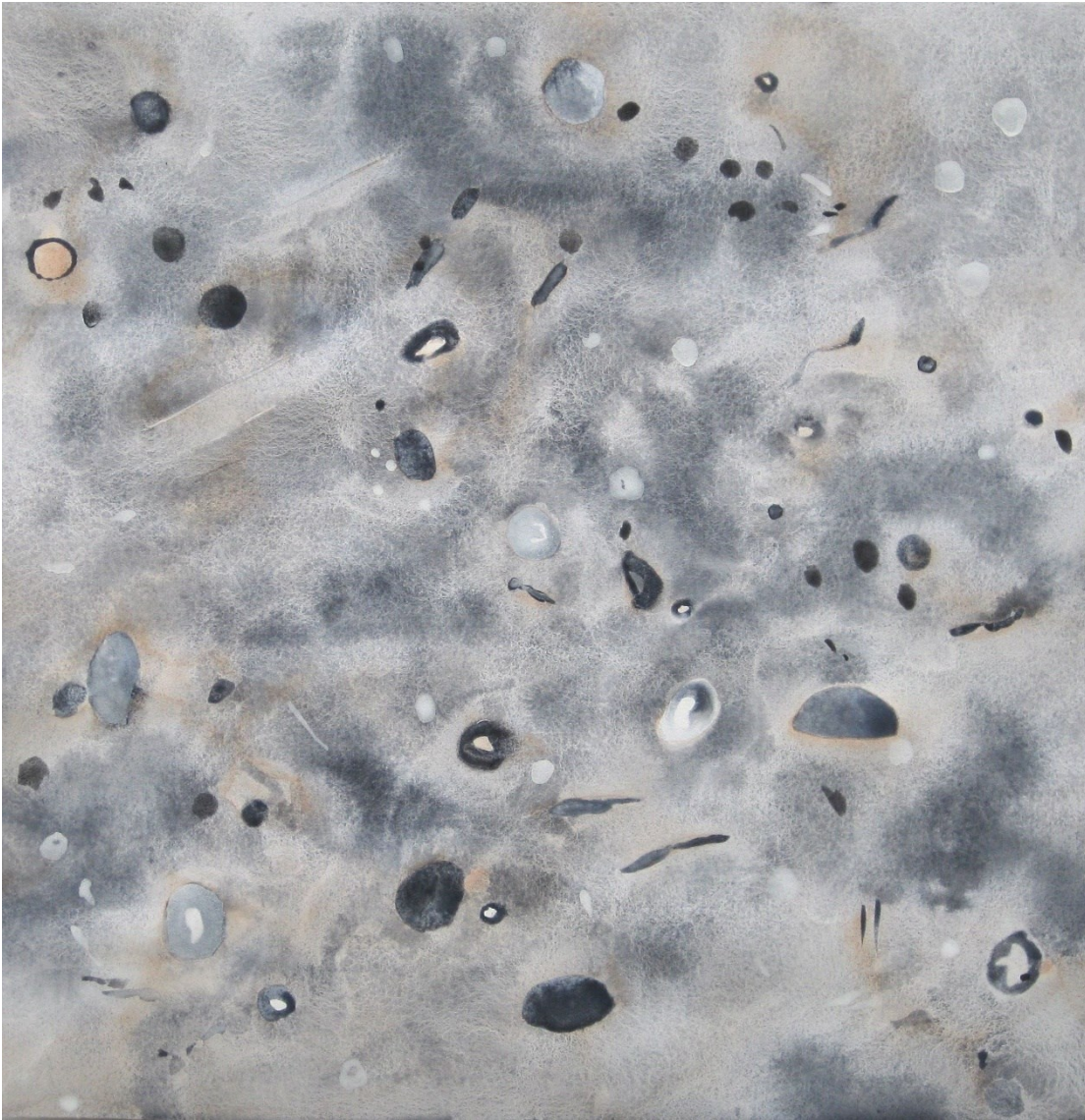
5 *Over Land Musselroe Bay, 2021*
Watercolour on Paper
H 94 x 91.5cm (including frame)
\$4,000
Finalist, Bay of Fires, Tas, 2021



6 *Storm Debris - White Beach, 2020*
H 96 x 94cm (including frame)
\$3,800
Finalist, Swan Hill, Vic, 2020.



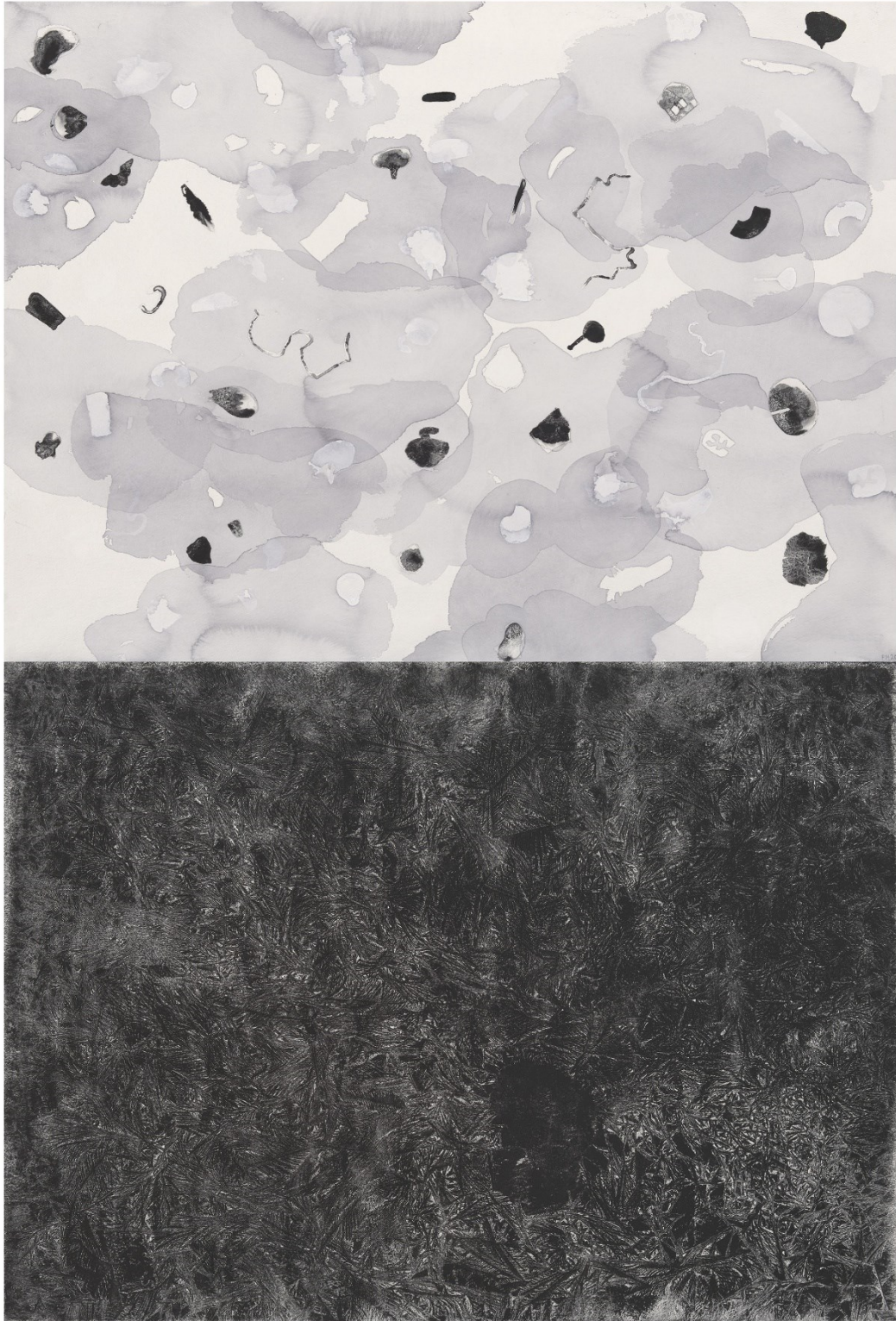
7 *Musselroe Bay Camp Site Mirabilia, 2020*
Watercolour on Paper
H 96 x w 94cm (including frame)
\$4,000
Finalist, St Kevins , Vic, 2021



8 *Rheban Beach*, 2014,
Watercolour on Paper
H 92 x 91cm (including frame)
\$3900
Winner watercolour section, Eskleigh, Tas, 2015



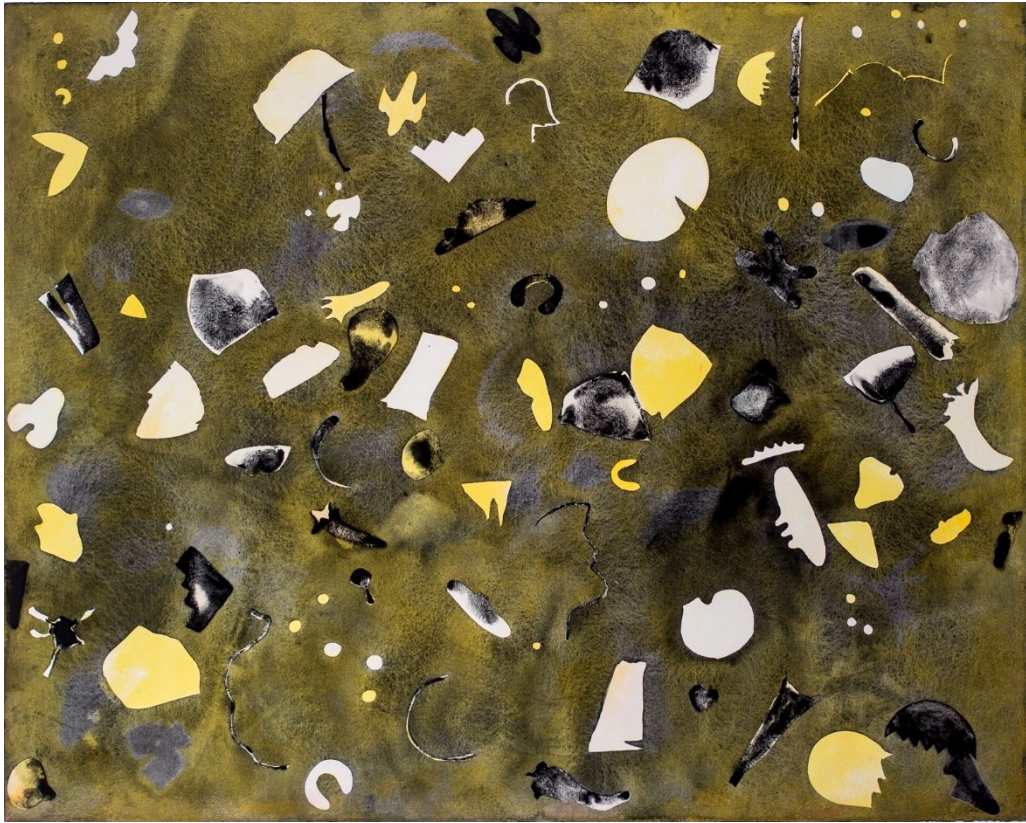
9 *Storm Debris - Trevallyn Pond, 2021*
Watercolour on Paper
h 93 x w 92 cm, (including frame)
\$4,000
Finalist, John Villiers, Qld, 2022



10 *Tamar Estuary*, 2020,
Watercolour on Paper,
h 133 x w 95 cm (including frame)
\$4,400.00,
Finalist, Tidal, Tas, 2020.



11 *Forest Walk #2, 2022*
Watercolour on Paper
h 109 x w 88 cm (including frame)
\$4,300.00,
Finalist, Hornsby, NSW, 2022



12 *In a Mirror, 2019*
Watercolour on Paper
h 90.5 x w 108 cm (including frame)
\$4,200.00,
Finalist, NOW Contemporary Art Prize, NSW, 2019



13 *Forest Floor*, 2022,
Watercolour on Paper,
h 88.5 x w 118.5cm (including frame)
\$4,300.00
Finalist Tasmanian Women's Art Award, 2022



14. *Eddystone Point Tidal Pool – Noon 2018*

Watercolour on Paper

H 92 x w 90cm (including frame)

\$4,200

Finalist, Tidal, 2018



15 *Dump*, 2021,
Watercolour and Ink on Paper,
h 94.5 x w 123 cm (including frame)
\$3,900.00
Finalist, Adelaide Perry, NSW, 2022